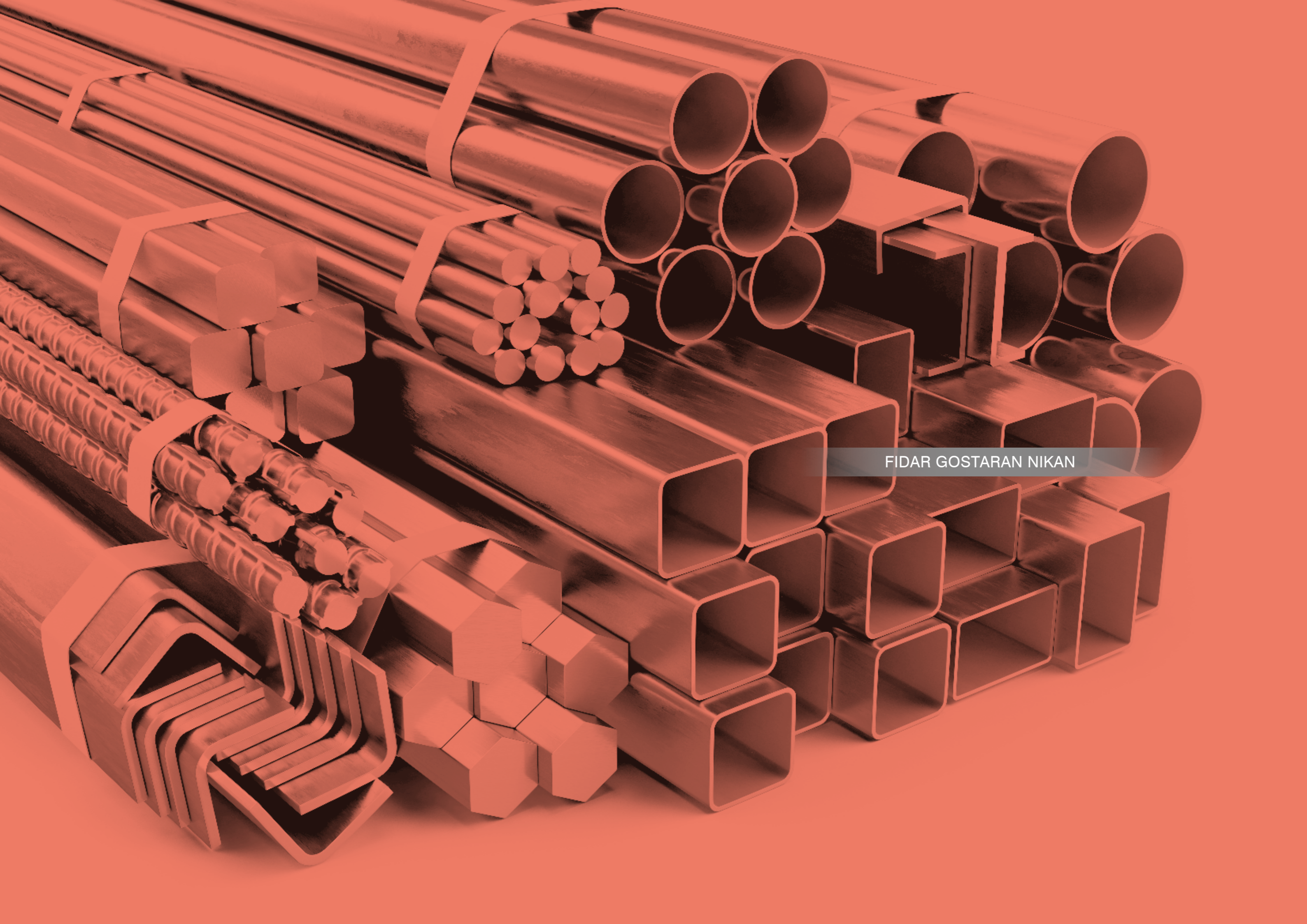




اسهامی خاص |

فیدار گستران نیکان

FIDAR GOSTARAN NIKAN



FIDAR GOSTARAN NIKAN

ABOUT FIDAR GOSTAN NIKAN

Fidar Gostaran Nikan Company started his activity in the field of trading a wide range of ironware required by its customers since 2014 , relying on its efficient, creative and expert human capital.

This company has made the best for attracting the maximum satisfaction and attention of the customers during the period of its activity while observing all qualitative requirements of customers and delivering the goods on time as well as presenting technical services .

Moreover, whereas a main part of the need for ironware of the ongoing projects of the country are imported and adaptation of engineering standards and technical quality to the needs of the customers is very important, Fidar Gostaran Nikan Company has some plans for importing the goods from the best and the most valid steel factories every year, having specialized warehouse.

Also based on the relative advantage for exporting some products of factories producing steel in Iran, this company has been able to play an important role in exporting the steel products to other countries especially to neighboring countries through continuous marketing activities.

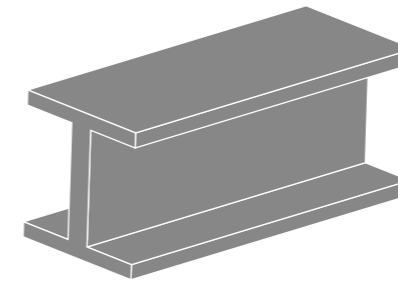
شرکت فیدار گستران نیکان با اتکا بر سرمایه انسانی کارآمد، متخصص و خلاق در سال ۱۳۹۳ تاسیس و شروع به فعالیت در زمینه تجارت طیف وسیعی از آهن آلات مورد نیاز مشتریان خود نموده است .

این شرکت در طول سالها فعالیت با رعایت دقیق الزامات کیفی مدنظر مشتریان و ارسال به موقع کالا و همچنین ارائه خدمات فنی ، تمام تلاش خود را جهت جلب رضایت حداکثری مشتریان خود بکار برده است .

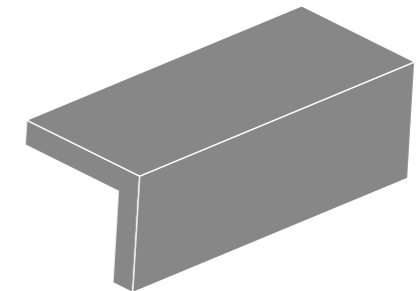
علاوه بر آن از آنجا که همواره بخش مهمی از نیاز آهن آلات پروژه های در دست اقدام در کشور وارداتی بوده و تطابق استانداردهای مهندسی و کیفیت فنی با نیازهای مشتریان از اهمیت بالایی برخوردار است، شرکت فیدار گستران نیکان ضمن دارا بودن انبارهای تخصصی همه ساله اقدام به برنامه ریزی جهت واردات از بهترین و معتبرترین کارخانجات فولاد می نماید .

همچنین با توجه به وجود مزیت نسبی جهت صادرات برخی محصولات کارخانجات تولید کننده فولاد در ایران، این شرکت توانسته است از طریق فعالیتهای مستمر بازاریابی نقش بسزایی در صادرات محصولات فولادی به سایر کشور ها بخصوص کشورهای همسایه ایفا نماید .

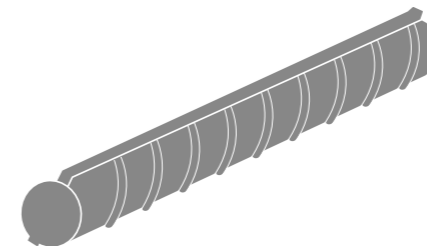
PRODUCT RANGE



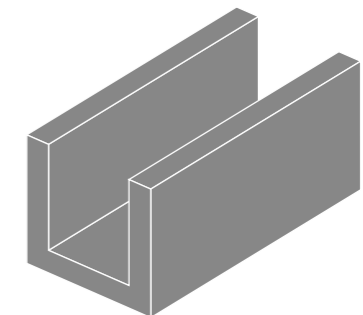
| IPE |



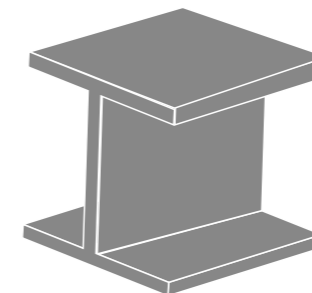
| EQUAL ANGLE |



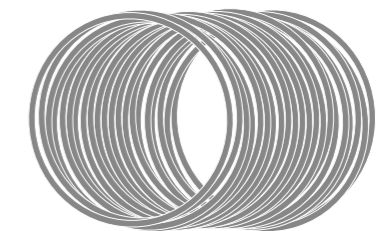
| DEFORMED BAR |



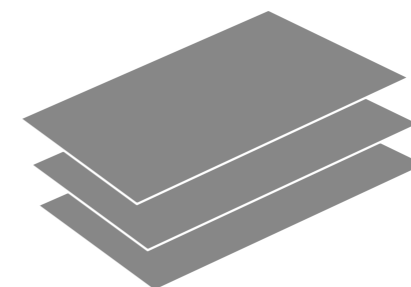
| U CHANNEL |



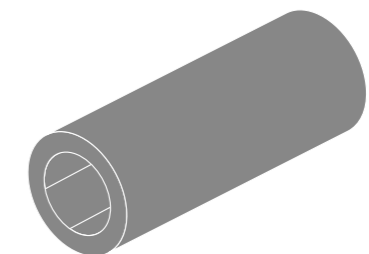
| H-BEAM |



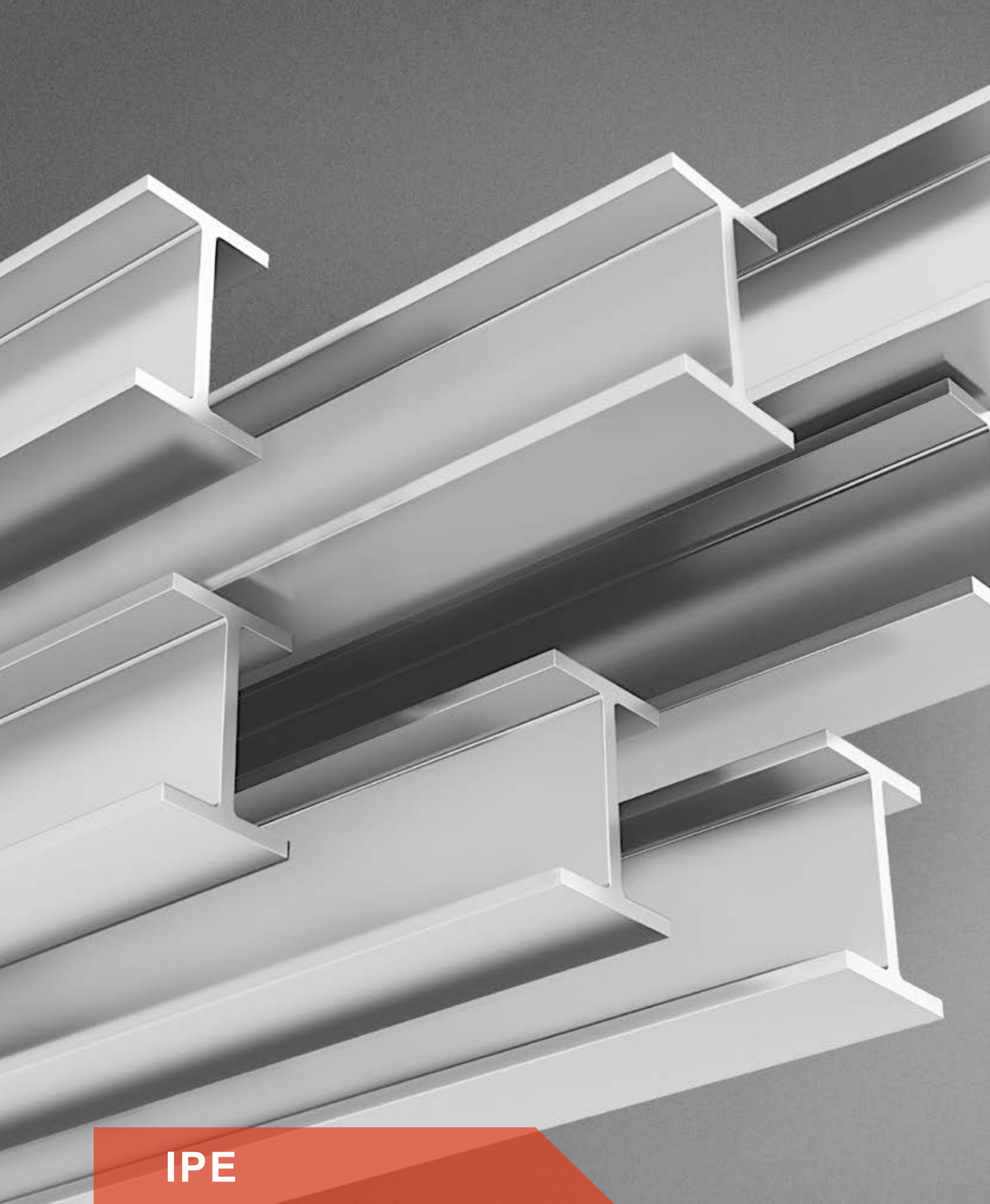
| STEEL WIRE ROD |



| PLATE |



| PIPE |



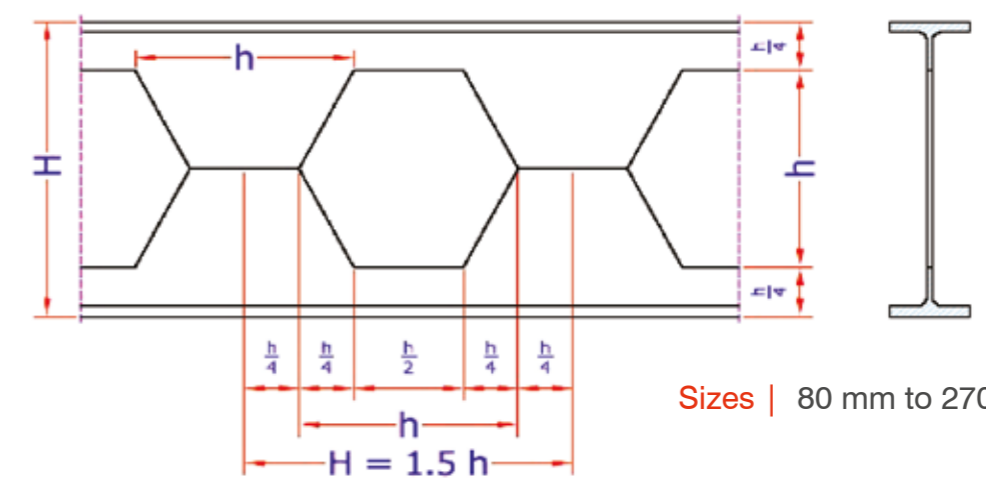
IPE

APPLICATION

Trusses | Transmission towers | Telecommunication towers | Bracing for general structures | stiffeners in structural use

W_{xb}	I_{xb}	F_b	W_{xa}	I_{xa}	G	F_a	t	s	H	h	Cast IPE
cm ³	cm ⁴	cm ²	cm ³	cm ⁴	kg/m (per 1.5h)	cm ²	mm	mm	mm	mm	
4750	213700	120	5230	235300	110	192	19	12	900	600	900

31.6	189	6.12	34.3	206	0.718	9.16	5.2	3.8	120	80	120
53.7	403	8.25	58.2	437	1.21	12.4	5.7	4.1	150	100	150
82.8	746	10.6	89.9	809	1.86	15.8	6.3	4.4	180	120	180
121	1270	13.1	131	1370	2.7	19.7	6.9	4.7	210	140	210
169	2030	16.1	184	2200	3.78	24.1	7.4	5	240	160	240
228	3070	19.1	247	3330	5.06	28.7	8	5.3	270	180	270
302	4540	22.9	327	4910	6.7	34.1	8.5	5.6	300	200	300
392	6460	26.9	423	6990	8.63	39.9	9.2	5.9	330	220	330
504	9070	31.7	544	9790	11	46.5	9.8	6.2	360	240	360
665	13470	37	719	14550	14.6	54.8	10.2	6.6	405	270	405
863	19410	43.2	934	21010	19	64.5	10.7	7.1	450	300	450
1100	27330	50.2	1200	29580	24.3	75	11.5	7.5	495	330	495
1400	37780	58.3	1510	40890	30.8	87.1	12.7	8	540	360	540
1790	53700	67.3	1940	58290	39.7	102	13.5	8.6	600	400	600
2320	78290	77.7	2530	85430	52.2	120	14.6	9.4	675	450	675
2980	111800	90.5	3260	122400	68.2	142	16	10.2	750	500	750
3770	155700	103	4150	171100	86.6	165	17.2	11.1	825	550	825
4750	213700	120	5230	235300	110	192	19	12	900	600	900



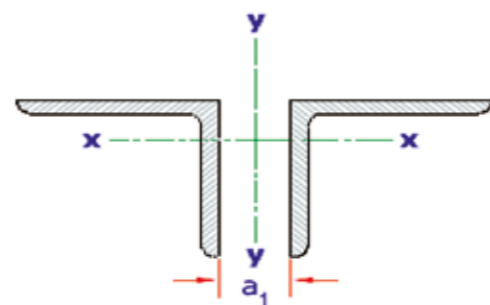
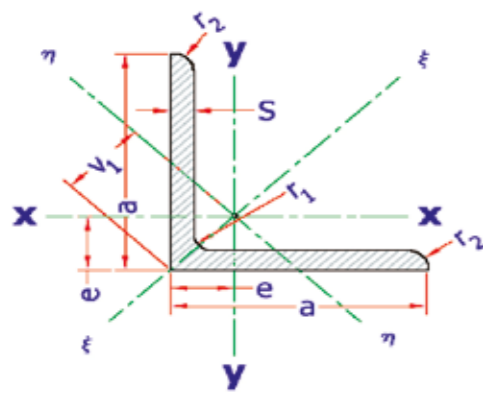
Sizes | 80 mm to 270 mm



EQUAL STEEL ANGLE

APPLICATION

Trusses | Transmission towers | Telecommunication towers | Bracing for general structures | stiffeners in structural use

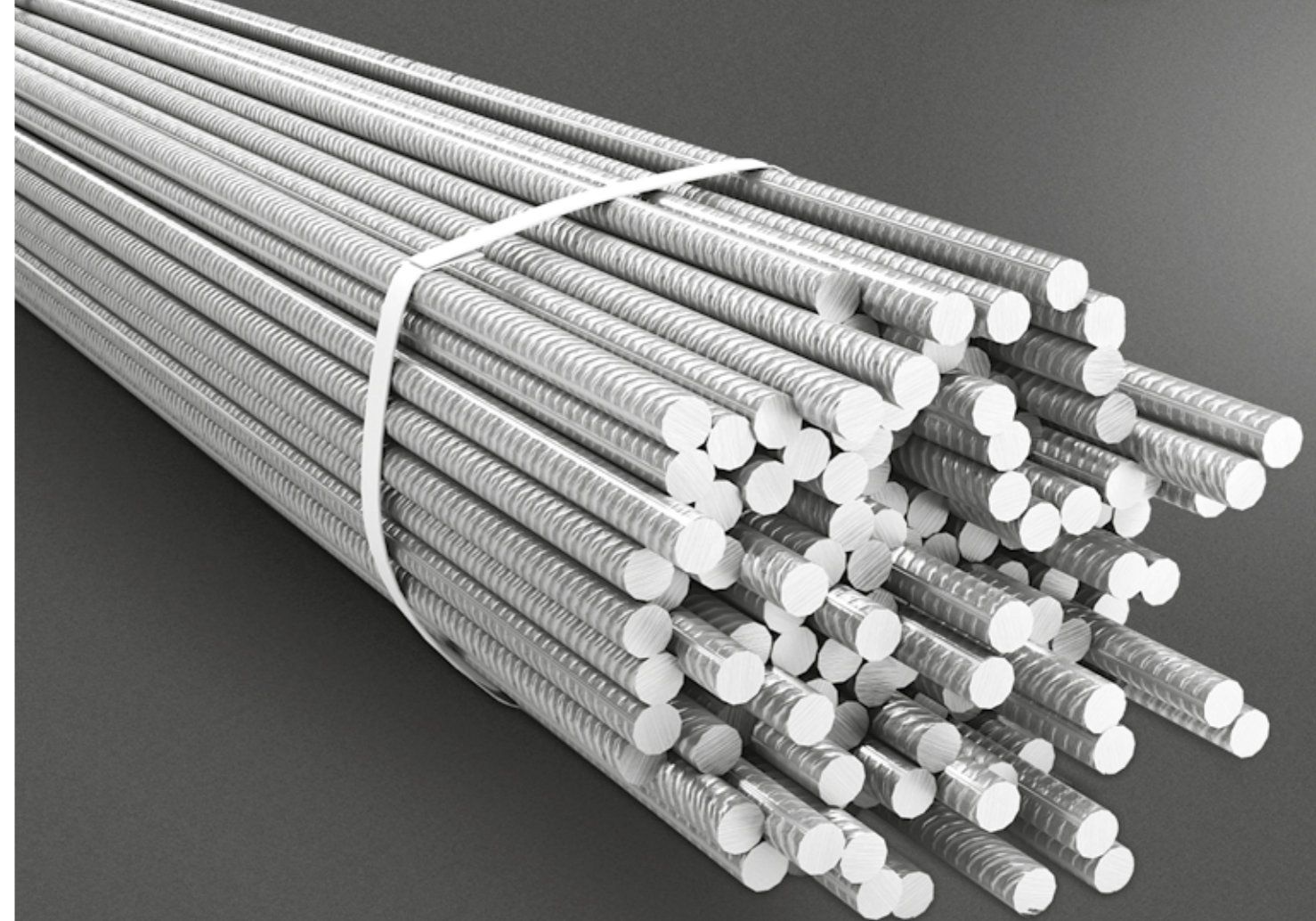


For any value of a_1 : $J_y > J_x$

Sizes | 20 mm to 250 mm

i_η	W_η	J_η	i_ξ	J_ξ	$i_{x=y}$	$\frac{W_x}{W_y}$	$J_x=J_y$	v_1	w	e	G	F	r_2	r_1	a X s
cm	cm ³	cm	cm	cm ⁴	cm	cm ³	cm ⁴	cm	cm	cm	kg/m	cm ²	mm	mm	mm
3.89	186	1580	7.57	5990	6.02	270	3780	8.47	14.1	5.99	82	105	9	18	200 X 28

0.37	0.18	0.15	0.74	0.62	0.59	0.28	0.39	0.85	1.41	0.6	0.88	1.12	2	3.5	20 X 3
0.36	0.21	0.19	0.73	0.77	0.58	0.35	0.48	0.9	1.41	0.64	1.14	1.45	2	3.5	20 X 4
0.47	0.3	0.31	0.95	1.27	0.75	0.45	0.79	1.03	1.77	0.73	1.12	1.42	2	3.5	25 X 3
0.47	0.37	0.4	0.93	1.61	0.74	0.58	1.01	1.08	1.77	0.76	1.45	1.85	2	3.5	25 X 4
0.47	0.44	0.5	0.91	1.87	0.72	0.69	1.18	1.13	1.77	0.8	1.77	2.26	2	3.5	25 X 5
0.57	0.48	0.57	1.14	2.24	0.9	0.65	1.41	1.18	2.12	0.84	1.36	1.74	2.5	5	30 X 3
0.58	0.61	0.76	1.12	2.85	0.89	0.86	1.81	1.24	2.12	0.89	1.78	2.27	2.5	5	30 X 4
0.57	0.7	0.91	1.11	3.41	0.88	1.04	2.16	1.3	2.12	0.92	2.18	2.78	2.5	5	30 X 5
0.68	0.7	0.95	1.34	3.63	1.06	0.9	2.29	1.36	2.47	0.96	1.6	2.04	2.5	5	35 X 3
0.68	0.88	1.24	1.33	4.68	1.05	1.18	2.96	1.41	2.47	1	2.1	2.67	2.5	5	35 X 4
0.67	1.01	1.49	1.31	5.63	1.04	1.45	3.56	1.47	2.47	1.04	2.57	3.28	2.5	5	35 X 5
0.68	1.16	1.77	1.3	6.5	1.04	1.71	4.14	1.53	2.47	1.08	3.04	3.87	2.5	5	35 X 6
0.78	0.95	1.44	1.52	5.45	1.21	1.18	3.45	1.52	2.83	1.07	1.84	2.35	3	6	40 X 3
0.78	1.18	1.86	1.52	7.09	1.21	1.56	4.48	1.58	2.83	1.12	2.42	3.08	3	6	40 X 4
0.77	1.35	2.22	1.51	8.64	1.2	1.91	5.43	1.64	2.83	1.16	2.97	3.79	3	6	40 X 5
0.77	1.57	2.67	1.49	9.98	1.19	2.26	6.33	1.7	2.83	1.2	3.52	4.48	3	6	40 X 6
0.88	1.53	2.68	1.71	10.2	1.36	1.97	6.43	1.75	3.18	1.23	2.74	3.49	3.5	7	45 X 4
0.87	1.8	3.25	1.7	12.4	1.35	2.43	7.83	1.81	3.18	1.28	3.38	4.3	3.5	7	45 X 5
0.87	2.05	3.83	1.69	14.5	1.34	2.88	9.16	1.87	3.18	1.32	4	5.09	3.5	7	45 X 6
0.87	2.29	4.39	1.67	16.4	1.33	3.31	10.4	1.92	3.18	1.36	4.6	5.86	3.5	7	45 X 7
0.98	1.94	3.73	1.91	14.2	1.52	2.46	8.97	1.92	3.54	1.36	3.06	3.89	3.5	7	50 X 4
0.98	2.32	4.59	1.9	17.4	1.51	3.05	11	1.98	3.54	1.4	3.77	4.8	3.5	7	50 X 5
0.96	2.57	5.24	1.89	20.4	1.5	3.61	12.8	2.04	3.54	1.45	4.47	5.69	3.5	7	50 X 6
0.96	2.85	6.02	1.88	23.1	1.49	4.15	14.6	2.11	3.54	1.49	5.15	6.56	3.5	7	50 X 7
0.96	3.19	6.87	1.86	25.7	1.48	4.68	16.3	2.16	3.54	1.52	5.82	7.41	3.5	7	50 X 8
0.97	3.47	7.67	1.85	28.1	1.47	5.2	17.9	2.21	3.54	1.56	6.47	8.24	3.5	7	50 X 9
1.07	2.84	6.11	2.09	23.3	1.66	3.7	14.7	2.15	3.89	1.52	4.18	5.32	4	8	55 X 5
1.07	3.28	7.24	2.08	27.4	1.66	4.4	17.3	2.21	3.89	1.56	4.95	6.31	4	8	55 X 6
1.07	4.03	9.35	2.06	34.8	1.64	5.72	22.1	2.32	3.89	1.64	6.46	8.23	4	8	55 X 8
1.06	4.65	11.3	2.02	41.4	1.62	6.97	26.3	2.43	3.89	1.72	7.9	10.1	4	8	55 X 10
1.17	3.46	8.03	2.3	30.7	1.82	4.45	19.4	2.32	4.24	1.64	4.57	5.82	4	8	60 X 5
1.17	3.95	9.43	2.29	36.1	1.82	5.29	22.8	2.39	4.24	1.69	5.42	6.91	4	8	60 X 6
1.16	4.84	12.1	2.26	46.1	1.8	6.88	29.1	2.5	4.24	1.77	7.09	9.03	4	8	60 X 8
1.15	5.57	14.6	2.23	55.1	1.78	8.41	34.9	2.62	4.24	1.85	8.69	11.1	4	8	60 X 10
1.27	4.74	12.1	2.48	46.3	1.97	6.21	29.2	2.55	4.6	1.8	5.91	7.53	4.5	9	65 X 6
1.26	5.27	13.8	2.47	53	1.96	7.18	33.4	2.62	4.6	1.85	6.83	8.7	4.5	9	65 X 7
1.26	5.84	15.6	2.46	59.4	1.95	8.13	37.5	2.67	4.6	1.89	7.73	9.85	4.5	9	65 X 8
1.25	6.3	17.2	2.44	65.4	1.94	9.04	41.3	2.73	4.6	1.93	8.62	11	4.5	9	65 X 9
1.25	7.31	20.7	2.42	76.8	1.91	10.8	48.8	2.83	4.6	2	10.3	13.2	4.5	9	65 X 11
1.37	5.6	15.3	2.68	58.5	2.13	7.27	36.9	2.73	4.95	1.93	6.38	8.13	4.5	9	70 X 6
1.37	6.31	17.6	2.67	67.1	2.12	8.43	42.4	2.79	4.95	1.97	7.38	9.4	4.5	9	70 X 7
1.36	7.59	22	2.64	83.1	2.1	10.6	52.6	2.9	4.95	2.05	9.34	11.9	4.5	9	70 X 9
1.35	8.64	26	2.61	97.6	2.08	12.7	61.8	3.01	4.95	2.13	11.2	14.3	4.5	9	70 X 11
1.47	6.54	18.9	2.87	72.2	2.28	8.35	45.6	2.89	5.3	2.04	6.87	8.75	5	10	75 X 6
1.45	7.15	21.1	2.88	83.6	2.28	9.67	52.4	2.95	5.3	2.09	7.94	10.1	5	10	75 X 7



1.45	7.15	21.1	2.88	83.6	2.28	9.67	52.4	2.95	5.3	2.09	7.94	10.1	5	10	75 X 7
1.46	8.11	24.4	2.85	93.3	2.26	11	58.9	3.01	5.3	2.13	9.03	11.5	5	10	75 X 8
1.45	9.55	29.8	2.83	113	2.25	13.5	71.4	3.12	5.3	2.21	11.1	14.1	5	10	75 X 10
1.44	10.7	34.7	2.79	130	2.22	15.8	82.4	3.24	5.3	2.29	13.1	16.7	5	10	75 X 12
1.57	8.48	26.5	3.07	102	2.44	11.1	64.2	3.13	5.66	2.21	8.49	10.8	5	10	80 X 7
1.55	9.25	29.6	3.06	115	2.42	12.6	72.3	3.2	5.66	2.26	9.66	12.3	5	10	80 X 8
1.54	10.9	35.9	3.03	139	2.41	15.5	87.5	3.31	5.66	2.34	11.9	15.1	5	10	80 X 10
1.53	12.6	43	3	161	2.39	18.2	102	3.41	5.66	2.41	14.1	17.9	5	10	80 X 12
1.54	13.9	48.6	2.96	181	2.36	20.8	115	3.51	5.66	2.48	16.1	20.6	5	10	80 X 14
1.77	12.3	43.5	3.45	165	2.74	16.1	104	3.53	6.36	2.5	10.9	13.9	5.5	11	90 X 8
1.76	13.3	47.8	3.45	184	2.74	18	116	3.59	6.36	2.54	12.2	15.5	5.5	11	90 X 9
1.75	15.4	57.1	3.41	218	2.72	21.6	138	3.7	6.36	2.62	14.7	18.7	5.5	11	90 X 11
1.74	17.3	65.9	3.39	250	2.69	25.1	158	3.81	6.36	2.7	17.1	21.8	5.5	11	90 X 13
1.73	19.9	79.1	3.34	294	2.66	30.1	186	3.97	6.36	2.81	20.7	26.4	5.5	11	90 X 16
1.96	15.5	59.9	3.85	230	3.06	19.9	145	3.87	7.07	2.74	12.2	15.5	6	12	100 X 8
1.95	18.4	73.3	3.82	280	3.04	24.7	177	3.99	7.07	2.82	15.1	19.2	6	12	100 X 10
1.95	21	86.2	3.8	328	3.02	29.2	207	4.1	7.07	2.9	17.8	22.7	6	12	100 X 12
1.94	23.4	98.3	3.77	372	3	33.5	235	4.21	7.07	2.98	20.6	26.2	6	12	100 X 14
1.93	25.6	111	3.74	413	2.97	37.7	262	4.32	7.07	3.06	23.2	29.6	6	12	100 X 16
1.93	29.8	135	3.67	487	2.93	45.7	311	4.53	7.07	3.2	28.4	36.2	6	12	100 X 20
2.16	22.7	98.6	4.23	379	3.36	30.1	239	4.34	7.78	3.07	16.6	21.2	6	12	110 X 10
2.15	26.1	116	4.21	444	3.34	35.7	280	4.45	7.78	3.15	19.7	25.1	6	12	110 X 12
2.14	29.3	133	4.18	505	3.32	41	319	4.54	7.78	3.21	22.8	29	6	12	110 X 14
2.35	29.5	140	4.62	541	3.66	39.5	341	4.75	8.49	3.36	19.9	25.4	6.5	13	120 X 11
2.35	31.6	152	4.6	584	3.65	42.7	368	4.8	8.49	3.4	21.6	27.5	6.5	13	120 X 12
2.34	33.3	162	4.59	625	3.64	46	394	4.86	8.49	3.44	23.3	29.7	6.5	13	120 X 13
2.34	37.5	186	4.56	705	3.63	52.5	446	4.96	8.49	3.51	26.6	33.9	6.5	13	120 X 15
2.54	37.7	194	5	750	3.97	50.4	472	5.15	9.19	3.64	23.6	30	7	14	130 X 12
2.53	42.4	223	4.97	857	3.94	58.2	540	5.26	9.19	3.72	27.2	34.7	7	14	130 X 14
2.52	46.7	251	4.94	959	3.92	65.8	605	5.37	9.19	3.8	30.9	39.3	7	14	130 X 16
2.74	47.3	262	5.38	1010	4.27	63.3	638	5.54	9.9	3.92	27.5	35	7.5	15	140 X 13
2.73	52.7	298	5.36	1150	4.25	72.3	723	5.66	9.9	4	31.4	40	7.5	15	140 X 15
2.95	52	303	5.8	1170	4.6	67.7	737	5.38	10.6	4.12	27.3	34.8	8	16	150 X 12
2.94	58.3	347	5.77	1340	4.58	78.2	845	5.95	10.6	4.21	31.6	40.3	8	16	150 X 14
2.93	61.6	370	5.76	1430	4.57	83.5	898	6.01	10.6	4.25	33.8	43	8	16	150 X 15
2.93	64.4	391	5.74	1510	4.56	88.7	949	6.07	10.6	4.29	35.9	45.7	8	16	150 X 16
2.93	71	438	5.7	1670	4.54	99.3	1050	6.17	10.6	4.36	40.1	51	8	16	150 X 18
2.91	76	477	5.68	1820	4.51	109	1150	6.28	10.6	4.44	44.2	56.3	8	16	150 X 20
3.14	71.3	453	6.15	1750	4.88	95.6	1100	6.35	11.3	4.49	36.2	46.1	8.5	17	160 X 15
3.13	78.3	506	6.13	1950	4.86	108	1230	6.46	11.3	4.57	40.7	51.8	8.5	17	160 X 17
3.12	84.8	558	6.1	2140	4.84	118	1350	6.58	11.3	4.65	45.1	57.5	8.5	17	160 X 19
3.5	95.5	679	6.96	2690	5.51	130	1680	7.11	12.7	5.02	43.5	55.4	9	18	180 X 16
3.49	105	757	6.93	2970	5.49	145	1870	7.22	12.7	5.1	48.6	61.9	9	18	180 X 18
3.49	113	830	6.9	3260	5.47	160	2040	7.33	12.7	5.18	53.7	68.4	9	18	180 X 20
3.5	123	918	6.86	3510	5.44	174	2210	7.44	12.7	5.26	58.6	74.7	9	18	180 X 22
3.91	121	943	7.78	3740	6.15	162	2340	7.8	14.1	5.52	48.5	61.8	9	18	200 X 16
3.9	133	1050	7.75	4150	6.13	181	2600	7.92	14.1	5.6	54.3	69.1	9	18	200 X 18
3.89	144	1160	7.72	4540	6.11	199	2850	8.04	14.1	5.68	59.9	76.4	9	18	200 X 20
3.9	167	1380	7.64	5280	6.06	235	3330	8.26	14.1	5.84	71.1	90.6	9	18	200 X 24
3.89	186	1580	7.57	5990	6.02	270	3780	8.47	14.1	5.99	82	105	9	18	200 X 28

DEFORMED STEEL BAR

AVAILABLE GRADE

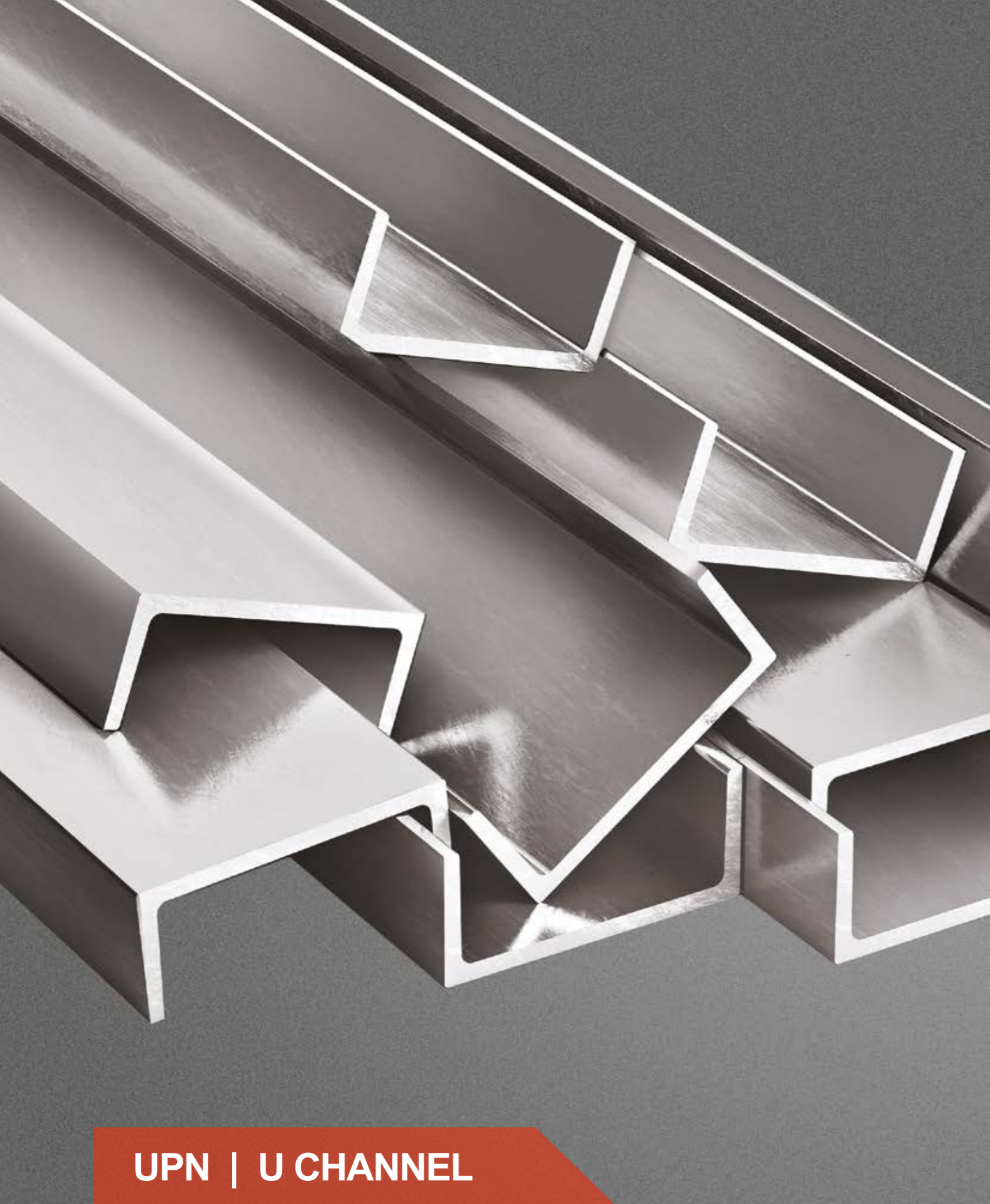
GB1449.2-2007 HRB335 / HRB400 / HRB500

BS449-1997 / 2009 G460B / B500A / B500B/B500C

DIN 488-4:2009-08 BST500S

ASTM A615 GR40 / GR60





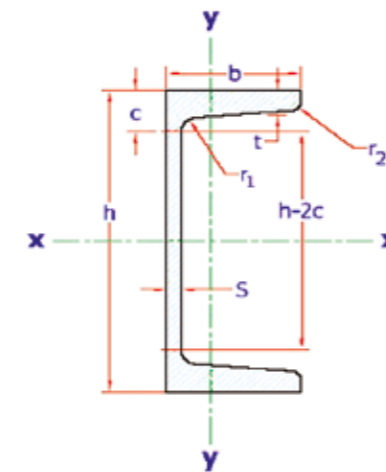
UPN | U CHANNEL

APPLICATION

Warehouses | Car parks | Workshops | Grandstands and Spot stadiums |
Multi-story frame structures

a ₁	x _M	e _y	i _y	W _y	J _y	i _x	W _x	J _x	G	A	h _{2-c}	c	r ₂	t=r ₁	s	b	h
mm	cm	cm	cm	cm ³	cm ⁴	cm	cm ³	cm ⁴	kg/m	cm ²	mm	mm	mm	mm	mm	mm	mm
240	5.1	2.7	3	102	846	15	1020	20350	71.8	92	325	38	9	18	14	110	400

--	0.7	0.5	0.4	0.4	0.4	1.1	1.69	2.53	1.74	2.2	12	9	2	4.5	4	15	30
--	2.2	1.3	1	2.7	5.3	1.1	4.26	6.39	4.27	5.4	1	14.5	3.5	7	5	33	30
--	1	0.7	0.6	0.9	1.1	1.4	3.79	7.58	2.87	3.7	18	11	2.5	5.5	5	20	40
--	2.3	1.3	1	3.1	6.7	1.5	7.05	14.1	4.87	6.2	11	14.5	3.5	7	5	35	40
--	1.3	0.8	0.7	1.5	2.5	1.9	6.73	16.8	3.86	4.9	25	12.5	3	6	5	25	50
4	2.5	1.4	1.1	3.8	9.1	1.9	10.6	26.4	5.59	7.1	20	15	3.5	7	5	38	50
--	1.5	0.9	0.8	2.2	4.5	2.2	10.5	31.6	5.07	6.5	35	12.5	3	6	6	30	60
16	2.6	1.4	1.3	5.1	14	2.5	17.7	57.5	7.09	9	33	16	4	7.5	5.5	42	65
28	2.7	1.5	1.3	6.4	19	3.1	26.5	106	8.64	11	47	17	4	8	6	45	80
42	2.9	1.6	1.5	8.5	29	3.9	41.2	206	10.6	14	64	18	4.5	8.5	6	50	100
56	3	1.6	1.6	11	43	4.6	60.7	364	13.4	17	82	19	4.5	9	7	55	120
70	3.4	1.8	1.8	15	63	5.5	86.4	605	16	20	97	21	5	10	7	60	140
82	3.6	1.8	1.9	18	85	6.2	116	925	18.8	24	116	22.5	5.5	11	7.5	65	160
96	3.8	1.9	2	22	114	7	150	1350	22	28	133	23.5	5.5	11	8	70	180
108	3.9	2	2.1	27	148	7.7	191	1910	25.3	32	151	24.5	6	12	8.5	75	200
122	4.2	2.1	2.3	34	197	8.5	245	26900	29.4	37	166	26.5	6.5	13	9	80	220
134	4.4	2.2	2.4	40	248	9.2	300	3600	33.2	42	185	28	6.5	13	9.5	85	240
146	4.7	2.4	2.6	48	317	10	371	4820	37.9	48	201	30	7	14	10	90	260
160	5	2.5	2.7	57	399	11	448	6280	41.8	53	216	32	7.5	15	10	95	280
174	5.4	2.7	2.9	68	495	12	535	8030	46.2	59	232	34	8	16	10	100	300
182	4.8	2.6	2.8	81	597	12	679	10870	59.5	76	247	37	8.75	18	14	100	320
204	4.5	2.4	2.7	75	570	13	734	12840	60.6	77	283	34	8	16	14	100	350
227	4.6	2.4	2.8	79	615	14	829	15760	63.1	80	313	33.5	8	16	14	102	380
240	5.1	2.7	3	102	846	15	1020	20350	71.8	92	325	38	9	18	14	110	400



Sizes | 20 mm to 250 mm

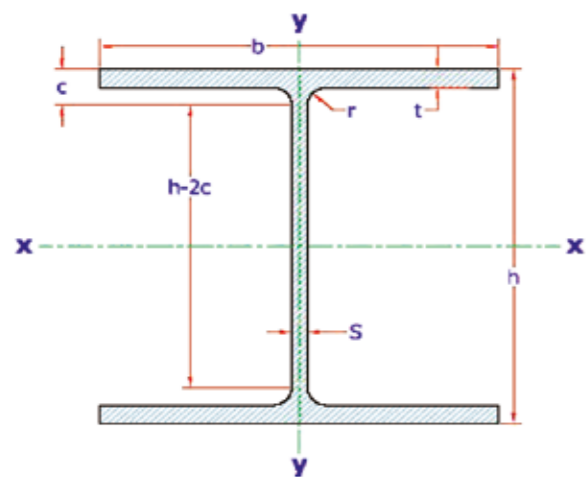




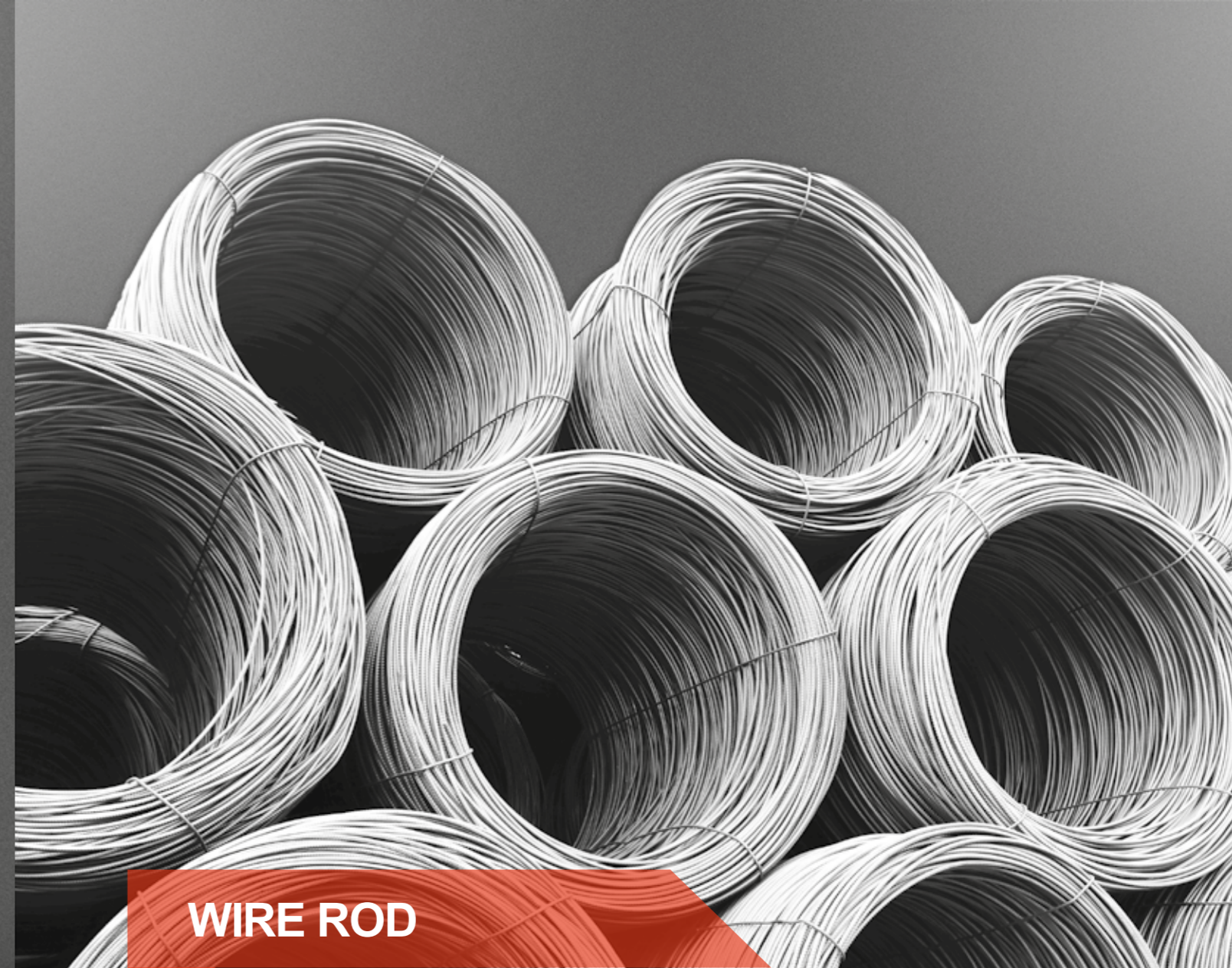
H-BEM | HEA - HEB

APPLICATION

Commercial building structure | Pre-engineered buildings | Machinery support structures | Prefabricated structure | Medium scale bridges



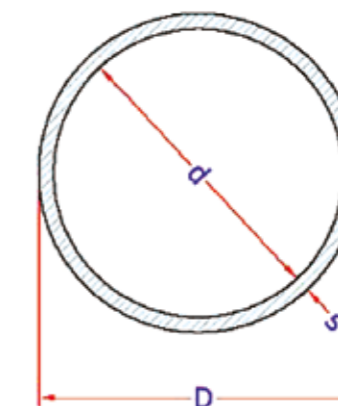
Sizes | 100 mm to 900 mm

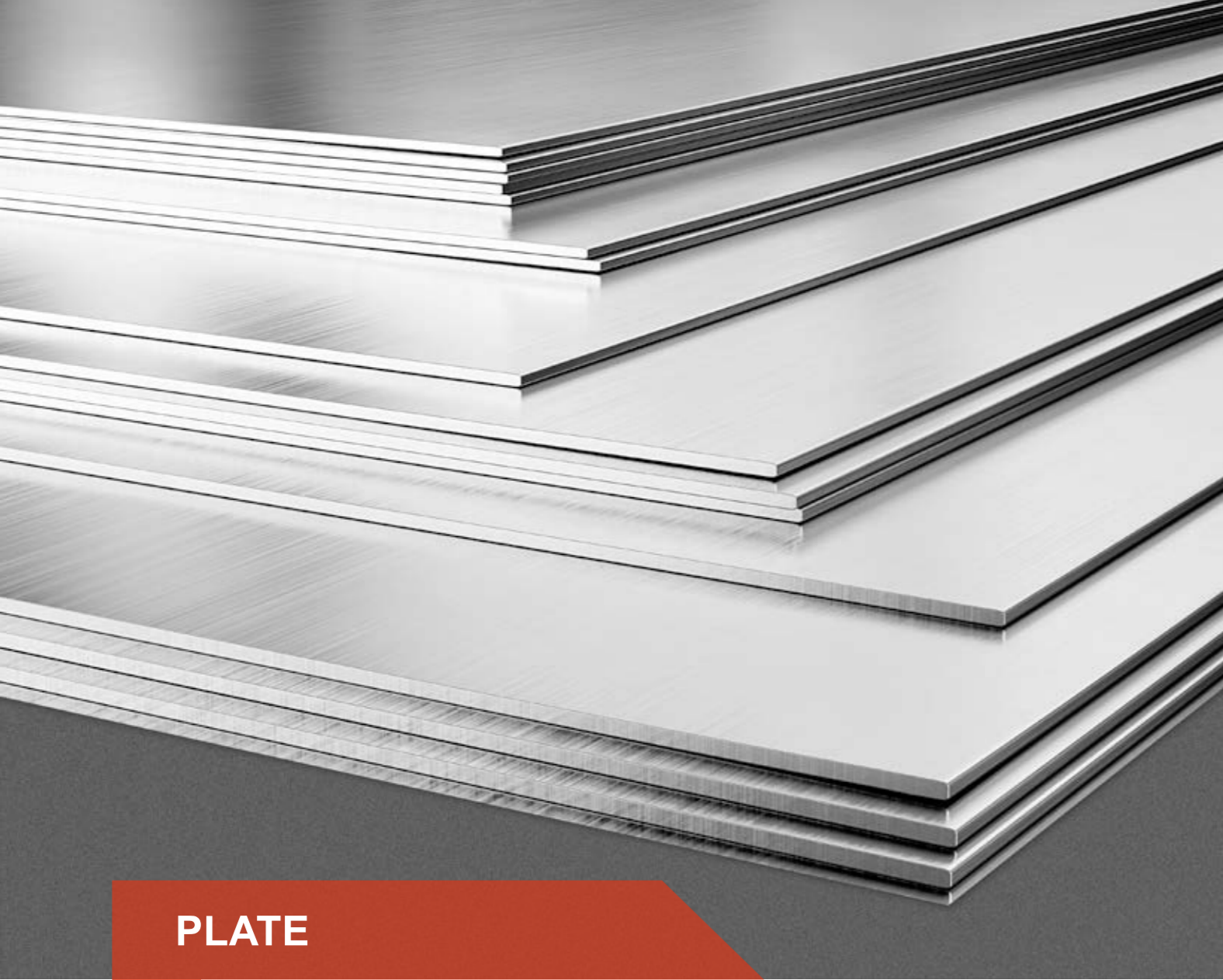


WIRE ROD

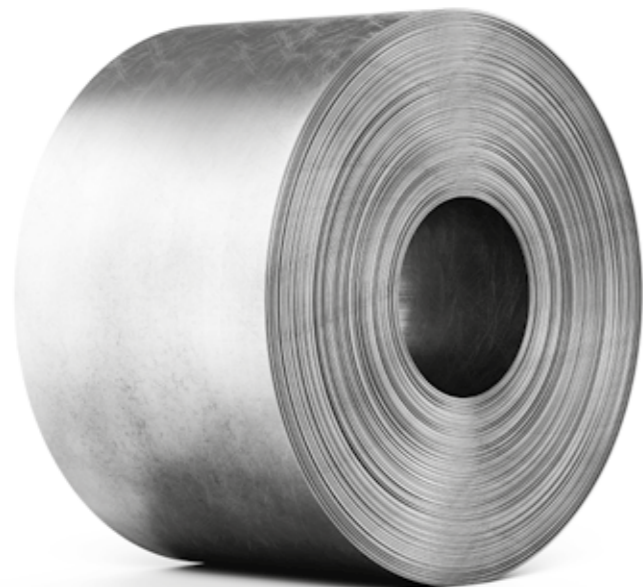
APPLICATION

Standard | AISI, ASTM, BS, DIN, GB, JIS
 Grade | Q195/235, SAE1006-1018B, H08A, 30MnSi, 62B-82B
 Wire Diameter | 5.5mm, 6.5mm, 7mm, 8mm, 9mm, 10mm, 12mm, 14mm
 Weight/Coil | 2Tons

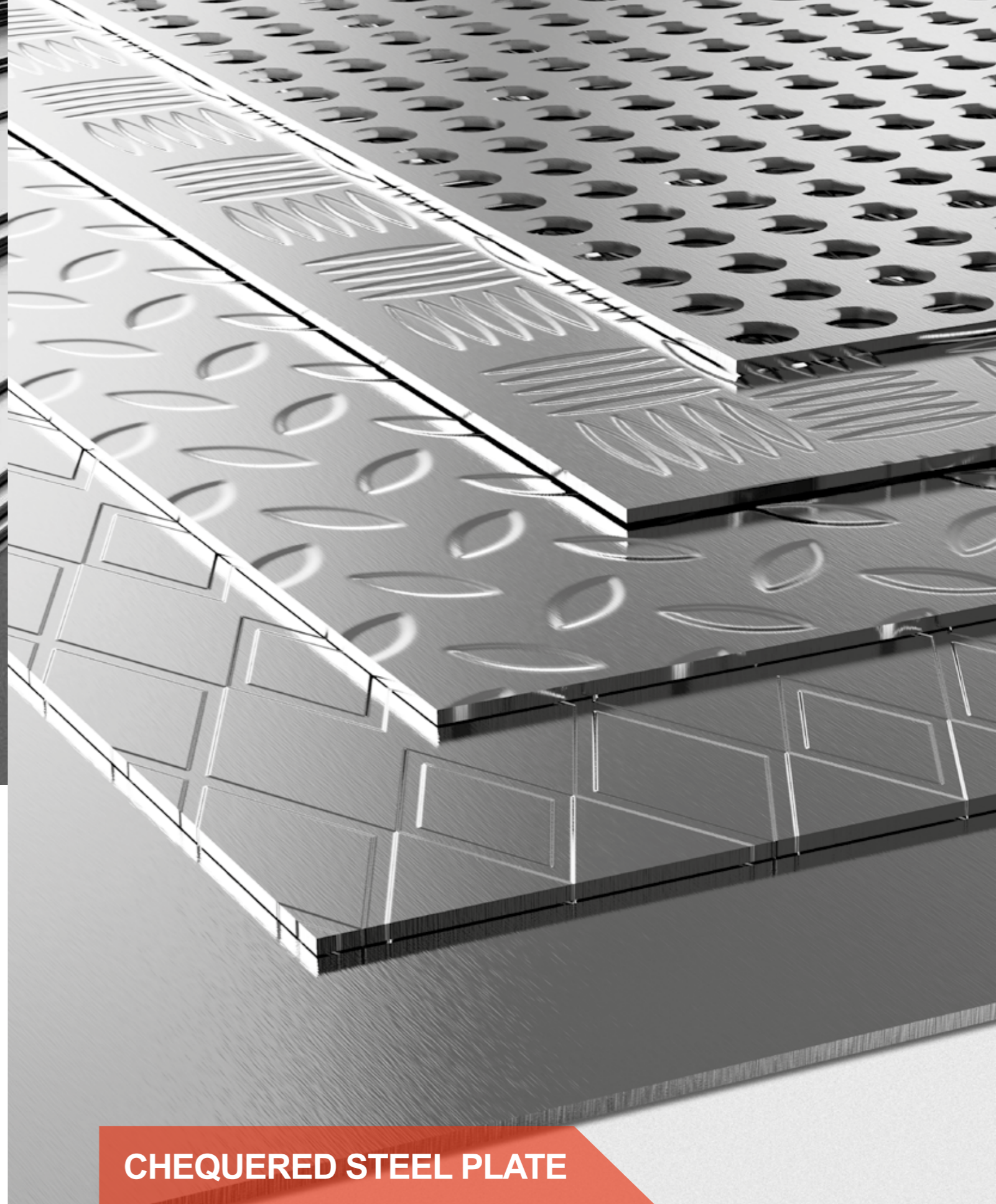




PLATE



■ **HOT ROLLED COIL**



CHEQUERED STEEL PLATE



فیدارگستران نیکان پیشینه‌ای نیک، آینده‌ای درخشان

Fidar Gostarannikan Reliable Background, Brilliant Future

Add | 2nd Floor, No. 53 , Hedayat St., Shariati St., Tehran , Iran

Tell | +98-21 22 57 2066 , +98-21 22 57 1591 , **Fax** | +98 21 2254 44 92

www.fidar-gn.com | **commercial@fidar-gn.com** | **Telegram : FIDARGOSTARANNIKAN**